



PRECISION LOCKNUTS FOR BEARINGS

GLO-YS 汎用精密ロックナット

PRECISION LOCKNUTS FOR BEARINGS

ゆるみ止め汎用精密ロックナット

8種類を新発売

株式会社 **グローバルパーツ**

〒577-0062
大阪府東大阪市森河内東2丁目6番16号
TEL:06-6618-0802 (代) FAX:06-6618-1222
E-mail : glo-j@glo-j.co.jp
URL : <http://glo-j.co.jp>

GLOBAL PARTS CORP.

2-6-16, MORIKAWACHI-HIGASHI
HIGASHI-OSAKA, 577-0062, OSAKA JAPAN
Phone : 06-6618-0802 (代)
F a x : 06-6618-1222
E-mail : glo-j@glo-j.co.jp
URL : <http://glo-j.co.jp>



GLO-YS 汎用精密ロックナット
PRECISION LOCKNUTS FOR BEARINGS

今回の“ゆるみ止め精密ロックナット”は、
加工機・木工機・印刷機・専用機及び
その機械の主軸、ボールねじ、サポート
ベアリング用等に使用されます。
更にその使用用途は、
伝導システム機構・構造設計上
スペースを必要とする
一般産業機械等にご使用頂ける、
“ゆるみ止め汎用精密ロックナットシリーズ”です。

PRECISION LOCKNUTS FOR BEARINGS

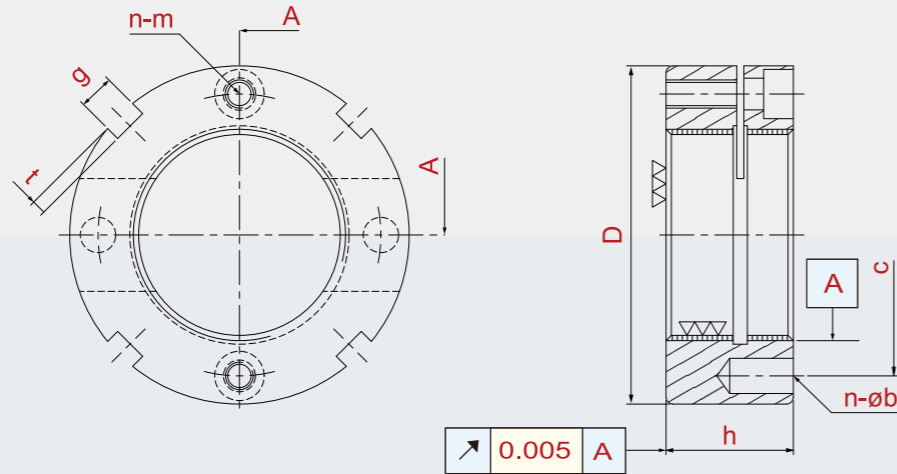
Apply for machine tool,
wooden machine
printing machine,
specialized machine.
spindle, ballscrew,
power transmission system
industrial machine etc.



GLO-YSLK 寸法表 (dimension table)	GLO-YSLR 寸法表 (dimension table)	GLO-YSAM 寸法表 (dimension table)	GLO-YSMSW 寸法表 (dimension table)	GLO-YSFT 寸法表 (dimension table)	GLO-YSFTA 寸法表 (dimension table)	GLO-YSAN 寸法表 (dimension table)	GLO-YSRN 寸法表 (dimension table)	注意事項 (pay attention for usage)	使用例 (application)
1 - 2	3 - 4	5	6	7	8	9-10	11	12	12

ISO9001
ISO14001
OHSAS18001

※セットスクリュー付属/with set screws

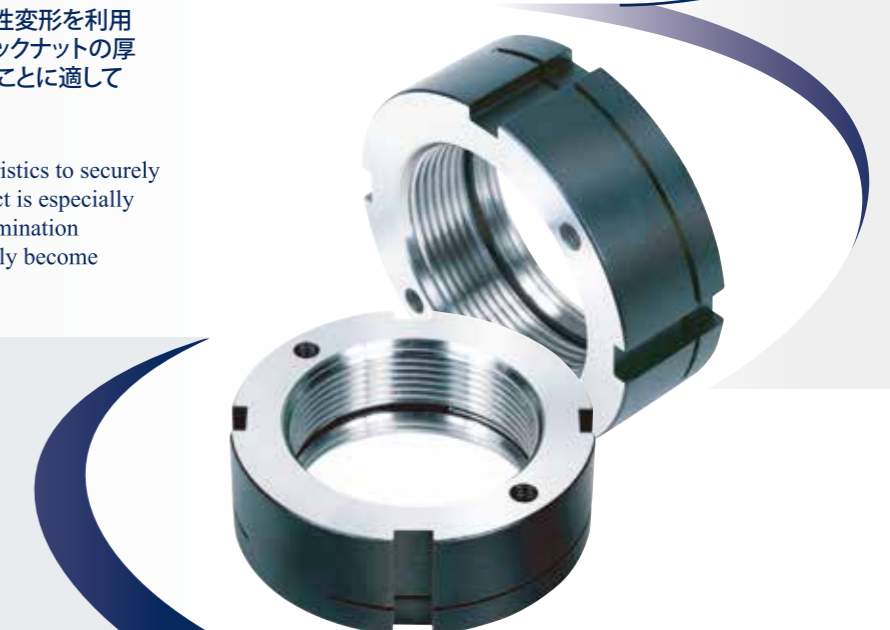


GLO-YSLKロックナットは、ロックナット本体の弾性変形を利用し軸を締め付ける方式になっています。さらに、ロックナットの厚み(h)がYSLKより薄いため狭いスペースで使用することに適しています。

GLO-YSLK locknut uses steel's elasticity characteristics to securely fix the locking nut in the axial direction. This product is especially suited to space restricted applications, or high contamination working environments where the nut could potentially become loosened more easily.

- 材質:SCM440(42CrMo4)調質
- RoHS対応
- 硬度:HRC 28°~32°
- ねじ精度:ISO 4H
- ねじ加工方式:切削加工
- 直角度:0.005mm

- Material Composition: SCM440(42CrMo4)Thermal refining
- Hardness: HRC 28° ~ 32°
- Thread Precision: ISO 4H
- Processing method: machined
- Squareness: 0.005mm



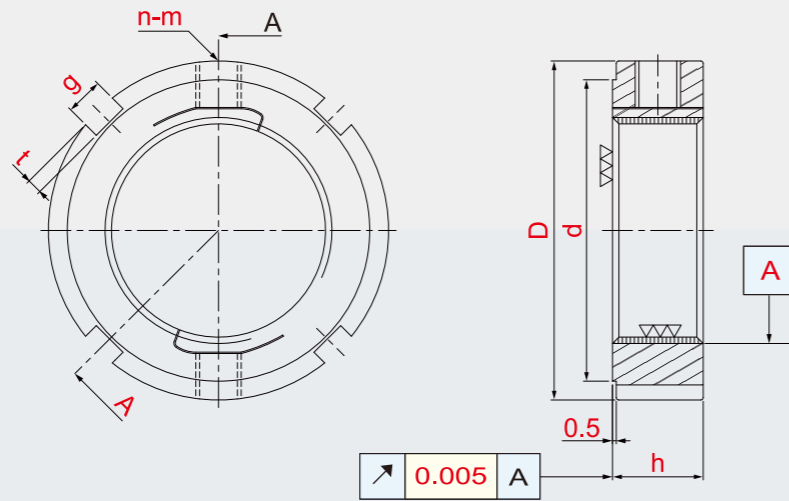
GLO-YSLK

GLO-YSLK

Thread	D	h	g	t	n - m	c	n - φ b	MAX.Nm	Thread	D	h	g	t	n - m	c	n - φ b	MAX.Nm
YSLK - M16X1.5P	34	14	4	2	2 - M4	24	2 - φ4	3.5	YSLK - M80X2.0P	110	24	8	3.5	6 - M6	95	2 - φ8	8.0
YSLK - M17X1.0P	37	16	4	2	2 - M4	26	2 - φ4	3.5	YSLK - M85X2.0P	115	24	8	3.5	6 - M6	100	2 - φ8	8.0
YSLK - M18X1.5P	38	16	4	2	2 - M4	28	2 - φ4	3.5	YSLK - M90X2.0P	120	26	10	4	6 - M6	105	2 - φ8	8.0
YSLK - M20X1.0P	40	16	4	2	2 - M4	30	2 - φ4	3.5	YSLK - M95X2.0P	125	26	10	4	6 - M6	110	2 - φ8	8.0
YSLK - M20X1.5P	40	16	4	2	2 - M4	30	2 - φ4	3.5	YSLK - M100X2.0P	130	26	10	4	6 - M6	115	2 - φ8	8.0
YSLK - M25X1.5P	45	18	5	2	2 - M4	35	2 - φ5	3.5	YSLK - M105X2.0P	135	28	10	4	6 - M6	120	2 - φ8	8.0
YSLK - M30X1.5P	48	18	5	2	2 - M4	39	2 - φ5	3.5	YSLK - M110X2.0P	140	28	10	4	6 - M6	125	2 - φ8	8.0
YSLK - M35X1.5P	53	18	5	2	2 - M4	44	2 - φ5	3.5	YSLK - M115X2.0P	145	28	10	4	6 - M6	130	2 - φ8	8.0
YSLK - M40X1.5P	58	20	6	2.5	2 - M4	49	2 - φ5	3.5	YSLK - M120X2.0P	155	30	12	5	6 - M6	136	2 - φ8	8.0
YSLK - M45X1.5P	68	20	6	2.5	2 - M4	57	2 - φ6	3.5	YSLK - M125X2.0P	160	30	12	5	6 - M6	140	2 - φ8	8.0
YSLK - M50X1.5P	70	20	6	2.5	2 - M4	60	2 - φ6	3.5	YSLK - M130X2.0P	165	30	12	5	6 - M6	148	2 - φ8	8.0
YSLK - M55X1.5P	75	22	7	3	2 - M4	65	2 - φ6	3.5	YSLK - M135X2.0P	170	32	12	5	6 - M6	153	2 - φ8	8.0
YSLK - M55X2.0P	75	22	7	3	2 - M4	65	2 - φ6	3.5	YSLK - M140X2.0P	180	32	12	5	6 - M6	160	2 - φ10	8.0
YSLK - M60X1.5P	84	22	7	3	2 - M5	72	2 - φ6	4.5	YSLK - M145X2.0P	185	32	12	5	6 - M6	165	2 - φ10	8.0
YSLK - M60X2.0P	84	22	7	3	2 - M5	72	2 - φ6	4.5	YSLK - M150X2.0P	190	32	12	5	6 - M6	170	2 - φ10	8.0
YSLK - M65X1.5P	88	22	7	3	2 - M5	77	2 - φ6	4.5	YSLK - M155X2.0P	195	34	14	6	6 - M8	175	2 - φ10	18.0
YSLK - M65X2.0P	88	22	7	3	2 - M5	77	2 - φ6	4.5	YSLK - M160X3.0P	205	34	14	6	6 - M8	178	2 - φ10	18.0
YSLK - M70X1.5P	95	24	8	3.5	2 - M5	82	2 - φ7	4.5	YSLK - M165X3.0P	210	34	14	6	6 - M8	184	2 - φ10	18.0
YSLK - M70X2.0P	95	24	8	3.5	2 - M5	82	2 - φ7	4.5	YSLK - M170X3.0P	215	34	14	6	6 - M8	193	2 - φ10	18.0
YSLK - M75X1.5P	100	24	8	3.5	6 - M5	87	2 - φ7	4.5	YSLK - M180X3.0P	230	36	16	7	6 - M8	205	2 - φ10	18.0
YSLK - M75X2.0P	100	24	8	3.5	6 - M5	87	2 - φ7	4.5	YSLK - M190X3.0P	240	36	16	7	6 - M8	215	2 - φ10	18.0
									YSLK - M200X3.0P	245	38	16	7	6 - M8	223	2 - φ10	18.0

※注:(1)このデータは参考値です。(2)1Nm=10.2kgf.cm=0.73lb.ft

※セットスクリュー付属/with set screws



GLO-YSLR

GLO-YSLRロックナットは、ロックナット本体の弾性変形を利用しラジアル方向(半径方向)から締め付ける方式になっています。さらに、ロックナットの厚み(h)がYSLRより若干薄いため狭いスペースで使用することに適しています。

GLO-YSLR locknut uses steel's elasticity characteristics to securely fix the locking nut in the radial direction. This type of nut is thinner and suited to narrow applications. The design is very simple and easy to lock. This type of nut is not suitable for high precision requirements as it is more difficult to assure the perpendicularity of the nut at this size.

- 材質:SCM440(42CrMo4)調質
- RoHS対応
- 硬度:HRC 28°~32°
- ねじ精度:ISO 4H
- ねじ加工方式:切削加工
- 直角度:0.005mm

- Material Composition: SCM440(42CrMo4)Thermal refining
- Hardness: HRC 26° ~ 28°
- Thread Precision: ISO 4H
- Processing method: machined
- Squareness: 0.005mm

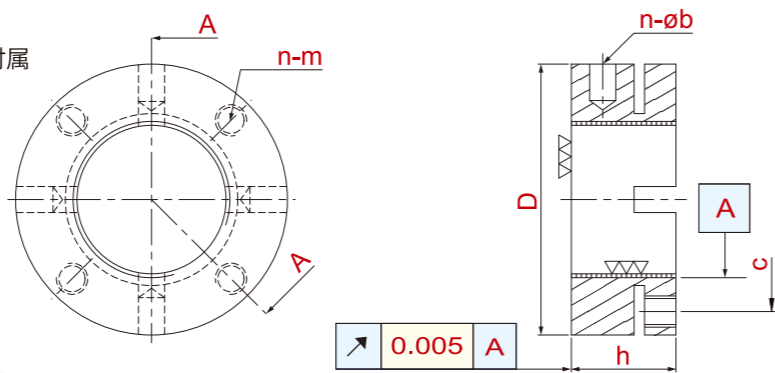


Thread	D	h	g	t	d	n - m	MAX.Nm	Thread	D	h	g	t	d	n - m	MAX.Nm
YSLR 1 - M12X1.0P	24	12	4	2	19	2 - M6	8.0	YSLR 20 - M65X2.0P	85	15	7	3	78	2 - M8	18.0
YSLR 2 - M14X1.0P	26	12	4	2	21	2 - M6	8.0	YSLR 21 - M70X2.0P	90	15	8	3.5	82	2 - M8	18.0
YSLR 3 - M15X1.0P	30	12	4	2	25	2 - M6	8.0	YSLR 22 - M75X2.0P	95	15	8	3.5	87	2 - M8	18.0
YSLR 4 - M17X1.0P	32	12	4	2	27	2 - M6	8.0	YSLR 23 - M80X2.0P	105	15	8	3.5	97	2 - M8	18.0
YSLR 5 - M18X1.0P	32	12	4	2	27	2 - M6	8.0	YSLR 24 - M85X2.0P	110	15	8	3.5	102	2 - M8	18.0
YSLR 6 - M20X1.0P	35	12	4	2	30	2 - M6	8.0	YSLR 25 - M90X2.0P	115	15	10	4	106	2 - M8	18.0
YSLR 7 - M22X1.5P	35	12	4	2	30	2 - M6	8.0	YSLR 26 - M95X2.0P	120	15	10	4	111	2 - M8	18.0
YSLR 8 - M25X1.5P	40	12	5	2	35	2 - M6	8.0	YSLR 27 - M100X2.0P	125	15	10	4	116	2 - M8	18.0
YSLR 9 - M30X1.5P	45	12	5	2	40	2 - M6	8.0	YSLR 28 - M105X2.0P	130	20	12	5	119	2 - M8	18.0
YSLR 10 - M32X1.5P	46	12	5	2	41	2 - M6	8.0	YSLR 29 - M110X2.0P	135	20	12	5	124	2 - M8	18.0
YSLR 11 - M35X1.5P	50	12	5	2	45	2 - M6	8.0	YSLR 30 - M115X2.0P	140	20	12	5	129	2 - M8	18.0
YSLR 12 - M38X1.5P	52	12	5	2	47	2 - M6	8.0	YSLR 31 - M120X2.0P	145	20	12	5	134	2 - M8	18.0
YSLR 13 - M40X1.5P	55	12	6	2.5	49	2 - M6	8.0	YSLR 32 - M125X2.0P	150	20	12	5	139	2 - M8	18.0
YSLR 14 - M42X1.5P	56	12	6	2.5	50	2 - M6	8.0	YSLR 33 - M130X2.0P	155	20	12	5	144	2 - M8	18.0
YSLR 15 - M45X1.5P	60	12	6	2.5	54	2 - M6	8.0	YSLR 34 - M135X2.0P	165	20	14	6	152	2 - M10	35.0
YSLR 16 - M50X1.5P	65	12	6	2.5	59	2 - M6	8.0	YSLR 35 - M140X2.0P	170	20	14	6	157	2 - M10	35.0
YSLR 17 - M52X1.5P	67	12	6	2.5	61	2 - M6	8.0	YSLR 36 - M145X2.0P	175	20	14	6	162	2 - M10	35.0
YSLR 18 - M55X2.0P	75	15	7	3	68	2 - M8	18.0	YSLR 37 - M150X2.0P	180	20	14	6	167	2 - M10	35.0
YSLR 19 - M60X2.0P	80	15	7	3	73	2 - M8	18.0								

※注:(1)このデータは参考値です。(2)1Nm=10.2kgf.cm=0.73lb.ft



※セットスクリウ付属
/with set screws



GLO-YSAMロックナットは、ロックナット本体の弾性変形を利用しアキシャル方向(軸方向)から軸を締め付ける方式になっています。さらに、厚み(h)がYS4より厚いため大きな軸力を負荷できます。

GLO-YSAM locknut uses steel's elasticity characteristics to securely fix the locking nut in the axial direction.

●材質:SCM440(42CrMo4)調質 ●RoHS対応

Material Composition: SCM440(42CrMo4) Thermal refining

●硬度: HRC28°~32°

Hardness: HRC28°~32°

●ねじ精度: ISO 4H

Thread Precision: ISO 4H

●ねじ加工方式: 研削加工

Processing method: Grinding

●直角度: 0.002mm

Squareness: 0.002mm

●ねじ精度: ISO 4H

Thread Precision: ISO 4H

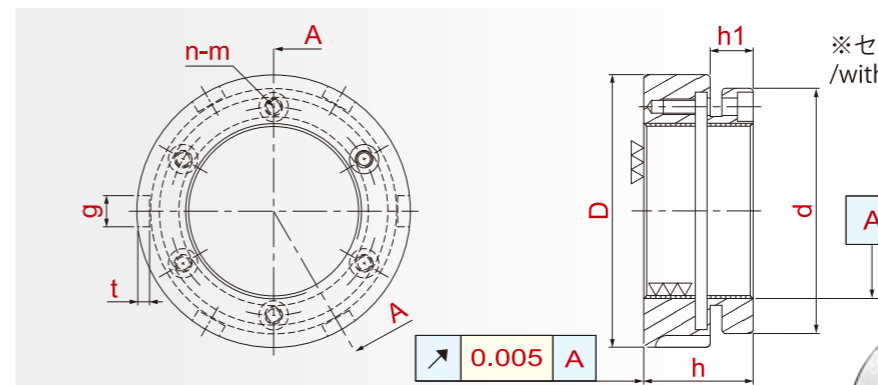
●ねじ加工方式: 切削加工

Processing method: Machined

●直角度: 0.005mm

Squareness: 0.005mm

GLO-YSAM



※セットスクリウ付属
/with set screws

GLO-YSMSWロックナットは、ロックナット本体の弾性変形を利用しアキシャル方向(軸方向)から軸を締め付ける方式になっています。さらに、厚み(h)がYSAMより厚く、外形(D)も大きいのでより大きな軸力を負荷できます。

GLO-YSMSW locknut uses steel's elasticity characteristics to securely fix the locking nut in the axial direction. This type of nut is thicker and the outer diameter is larger, making this nut suitable for heavier axial loads.

●材質:SCM440(42CrMo4)調質 ●RoHS対応

Material Composition: SCM440(42CrMo4) Thermal refining

●硬度: HRC28°~32°

Hardness: HRC28°~32°

●ねじ精度: ISO 4H

Thread Precision: ISO 4H

●ねじ加工方式: 切削加工

Processing method: Machined

●直角度: 0.005mm

Squareness: 0.005mm

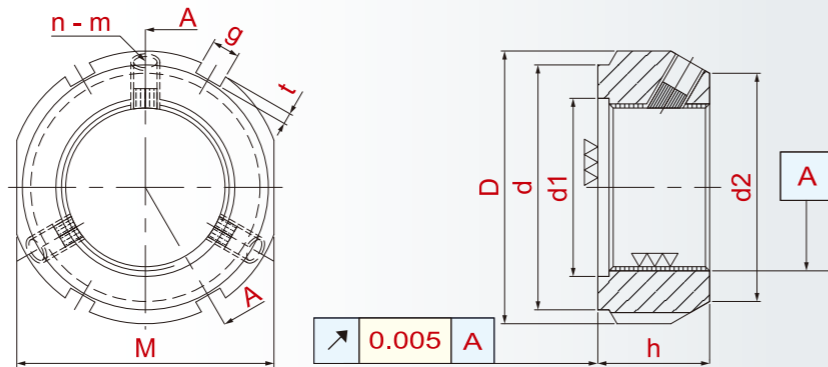


GLO-YSMSW

Thread	D	h	n - m	n - φb	c	MAX.Nm	Thread	D	h	h1	g	t	d	n-m	MAX.Nm
YSAM - M15 x 1.0P	30	18	4 - M5	4 - φ4	24	4.5	YSMSW 20/28-M20 x 1.5P	42	28	11	6	2.5	38	4-M4	3.5
YSAM - M17 x 1.0P	32	18	4 - M5	4 - φ4	26	4.5	YSMSW 20/40-M20 x 1.5P	52	40	11	7	3	42	4-M4	3.5
YSAM - M20 x 1.0P	38	18	4 - M6	4 - φ4	31	8	YSMSW 25/28-M25 x 1.5P	47	28	11	7	3	43	4-M4	3.5
YSAM - M25 x 1.5P	45	20	4 - M6	4 - φ5	38	8	YSMSW 25/40-M25 x 1.5P	62	40	11	8	3.5	47	4-M4	3.5
YSAM - M30 x 1.5P	52	20	4 - M6	4 - φ5	45	8	YSMSW 30/28-M30 x 1.5P	52	28	11	7	3	48	4-M4	3.5
YSAM - M30/65 - M30 x 1.5P	65	30	4 - M6	4 - φ6	45	8	YSMSW 30/44-M30 x 1.5P	68	44	11	8	3.5	52	4-M4	3.5
YSAM - M35 x 1.5P	65	22	4 - M6	4 - φ6	58	8	YSMSW 35/28-M35 x 1.5P	60	28	11	8	3.5	53	4-M4	3.5
YSAM - M35/58 - M35 x 1.5P	58	20	4 - M6	4 - φ5	51	8	YSMSW 35/44-M35 x 1.5P	73	44	11	8	3.5	60	4-M4	3.5
YSAM - M40 x 1.5P	65	22	4 - M6	4 - φ6	58	8	YSMSW 40/28-M40 x 1.5P	65	28	11	8	3.5	58	6-M4	3.5
YSAM - M40/85 - M40 x 1.5P	85	32	4 - M6	4 - φ6	58	8	YSMSW 40/44-M40 x 1.5P	75	44	11	8	3.5	62	6-M4	3.5
YSAM - M45 x 1.5P	70	22	6 - M6	6 - φ6	63	8	YSMSW 45/28-M45 x 1.5P	70	28	11	8	3.5	63	6-M4	3.5
YSAM - M50 x 1.5P	75	25	6 - M6	6 - φ6	68	8	YSMSW 45/44-M45 x 1.5P	90	44	11	10	4	70	6-M4	3.5
YSAM - M55 x 2.0P	85	26	6 - M8	6 - φ6	75	18	YSMSW 50/32-M50 x 1.5P	75	32	11	8	3.5	68	6-M4	3.5
YSAM - M60 x 2.0P	90	26	6 - M8	6 - φ6	80	18	YSMSW 50/46-M50 x 1.5P	95	46	11	10	4	75	6-M4	3.5
YSAM - M65 x 2.0P	100	26	6 - M8	6 - φ8	88	18	YSMSW 55/46-M55 x 1.5P	100	46	12	10	4	80	6-M5	4.5
YSAM - M70 x 2.0P	100	28	6 - M8	6 - φ8	90	18	YSMSW 60/46-M60 x 1.5P	100	46	12	10	4	85	6-M5	4.5
YSAM - M75 x 2.0P	115	30	6 - M10	6 - φ8	102	35	YSMSW 65/46-M65 x 1.5P	110	46	12	10	4	90	6-M5	4.5
YSAM - M80 x 2.0P	110	30	6 - M10	6 - φ8	98	35	YSMSW 70/46-M70 x 1.5P	115	46	12	10	4	95	6-M5	4.5
YSAM - M85 x 2.0P	115	30	6 - M10	6 - φ8	102	35									
YSAM - M90 x 2.0P	130	32	6 - M10	6 - φ8	118	35									
YSAM - M100 x 2.0P	130	30	8 - M10	8 - φ8	118	35									
YSAM - M110 x 2.0P	140	30	8 - M10	8 - φ8	128	35									
YSAM - M120 x 2.0P	155	30	8 - M10	8 - φ8	142	35									
YSAM - M130 x 2.0P	165	30	8 - M10	8 - φ8	152	35									

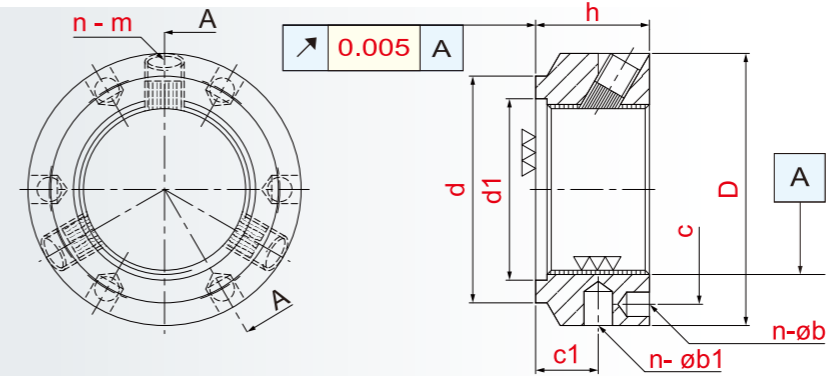


GLO-YSFT



GLO-YSFTロックナットは、ねじ山に対して斜め方向(30度)の3箇所から軸を締め付ける方式になっています。この優れた締め付け方式は高い緩みトルクを発揮し、緩み防止効果が非常に高くなっています。
GLO-YSFT Locks the threads from 30° angle direction with three point locks. The advantages of this design is the brass locking threads can fully contact with male threads, thus ensuring the assembled accuracy.

- 材質: SCM440(42CrMo4)調質 ●RoHS対応
Material Composition: SCM440(42CrMo4)Thermal refining
- 硬度: HRC28°~32°
Hardness: HRC28°~32°
- ねじ精度: ISO 4H
Thread Precision: ISO 4H
- ねじ加工方式: 研削加工
Processing method: Grinding
- 直角度: 0.002mm
Squareness: 0.002mm
- ねじ精度: ISO 4H
Thread Precision: ISO 4H
- ねじ加工方式: 切削加工
Processing method: Machined
- 直角度: 0.005mm
Squareness: 0.005mm



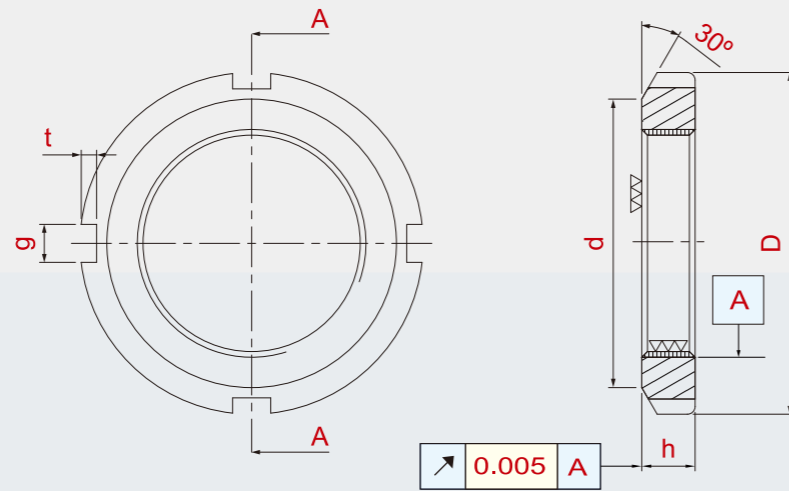
GLO-YSFTAロックナットは、ねじ山に対して斜め方向(30度)の3箇所から軸を締め付けるYSFTと同じ方式に、外径と当り面の裏側にレンチ穴を加えた方式になっています。そのため、YSFTでは対応できない箇所に適しています。
GLO-YSFTA Uses the same locking method as YSFT locknut, but this nut has wrench holes on the radius side and back surface side, making it easy for different assembly environment requirements.

- 材質: SCM440(42CrMo4)調質 ●RoHS対応
Material Composition: SCM440(42CrMo4)Thermal refining
- 硬度: HRC28°~32°
Hardness: HRC28°~32°
- ねじ精度: ISO 4H
Thread Precision: ISO 4H
- ねじ加工方式: 研削加工
Processing method: Grinding
- 直角度: 0.002mm
Squareness: 0.002mm
- ねじ精度: ISO 4H
Thread Precision: ISO 4H
- ねじ加工方式: 切削加工
Processing method: Machined
- 直角度: 0.005mm
Squareness: 0.005mm



GLO-YSFTA

Thread	D	h	g	t	d	d1	d2	M	n - m	MAX.Nm	Thread	D	h	d	d1	c	c1	n - øb	n - øb1	n - m	MAX.Nm	
YSFT - M10X0.75P	28	14	4	2	23	11	21	24	3 - M5	4.5	YSFTA-M 25X1.5P	42	20	35	26	32.5	11	6 - ø4.3	6 - ø4	3 - M6	8.0	
YSFT - M12X1.0P	30	14	4	2	25	13	23	27	3 - M5	4.5	YSFTA-M 30X1.5P	48	20	40	32	40.5	11	6 - ø4.3	6 - ø5	3 - M6	8.0	
YSFT - M15X1.0P	33	16	4	2	28	16	26	30	3 - M5	4.5	YSFTA-M 35X1.5P	53	20	47	38	45.5	11	6 - ø4.3	6 - ø5	3 - M6	8.0	
YSFT - M17X1.0P	37	18	5	2	33	18	29	34	3 - M6	8.0	YSFTA-M 40X1.5P	58	22	52	42	50.5	12	6 - ø4.3	6 - ø5	3 - M6	8.0	
YSFT - M20X1.0P	40	18	5	2	35	21	32	36	3 - M6	8.0	YSFTA-M 45X1.5P	68	22	58	48	58	12	6 - ø4.3	6 - ø6	3 - M6	8.0	
YSFT - M25X1.5P	44	20	5	2	39	26	36	41	3 - M6	8.0	YSFTA-M 50X1.5P	70	24	63	52	61.5	13	6 - ø4.3	6 - ø6	3 - M6	8.0	
YSFT - M30X1.5P	49	20	5	2	44	32	41	46	3 - M6	8.0	YSFTA-M 55X2.0P	75	24	70	58	66.5	13	6 - ø4.3	6 - ø6	3 - M6	8.0	
YSFT - M35X1.5P	54	22	5	2	49	38	46	50	3 - M6	8.0	YSFTA-M 60X2.0P	84	24	75	62	74.5	13	6 - ø5.3	6 - ø6	3 - M8	18.0	
YSFT - M40X1.5P	65	22	6	2.5	59	42	56	60	3 - M6	8.0	YSFTA-M 65X2.0P	88	25	80	68	78.5	13	6 - ø5.3	6 - ø6	3 - M8	18.0	
YSFT - M45X1.5P	70	22	6	2.5	64	48	61	65	3 - M6	8.0	YSFTA-M 70X2.0P	95	26	86	72	85	14	6 - ø5.3	6 - ø8	3 - M8	18.0	
YSFT - M50X1.5P	75	25	7	3	68	52	65	70	3 - M6	8.0	YSFTA-M 75X2.0P	100	26	91	77	88	13	6 - ø6.4	6 - ø8	3 - M8	18.0	
YSFT - M55X2.0P	85	25	7	3	78	58	74	80	3 - M8	18.0	YSFTA-M 80X2.0P	110	30	97	83	95	16	6 - ø6.4	6 - ø8	3 - M8	18.0	
YSFT - M60X2.0P	90	26	8	3.5	82	62	78	85	3 - M8	18.0	YSFTA-M 85X2.0P	115	32	102	88	100	17	6 - ø6.4	6 - ø8	3 - M10	35.0	
YSFT - M65X2.0P	95	28	8	3.5	87	68	83	90	3 - M8	18.0	YSFTA-M 90X2.0P	120	32	110	93	108	17	6 - ø6.4	6 - ø8	3 - M10	35.0	
YSFT - M70X2.0P	100	28	8	3.5	92	72	88	95	3 - M8	18.0	YSFTA-M 95X2.0P	125	32	114	98	113	17	6 - ø6.4	6 - ø8	3 - M10	35.0	
YSFT - M75X2.0P	105	28	8	3.5	97	77	93	100	3 - M8	18.0	YSFTA-M 100X2.0P	130	32	120	103	118	17	6 - ø6.4	6 - ø8	3 - M10	35.0	
YSFT - M80X2.0P	110	32	8	3.5	100	83	98	-	3 - M8	18.0	YSFTA-M 110X2.0P	140	32	132	112	128	17	6 - ø6.4	6 - ø8	3 - M10	35.0	
YSFT - M85X2.0P	120	32	10	4	110	88	107	-	3 - M10	35.0	YSFTA-M 120X2.0P	155	32	142	122	140	17	6 - ø6.4	6 - ø8	3 - M10	35.0	
YSFT - M90X2.0P	125	32	10	4	115	93	112	-	3 - M10	35.0	YSFTA-M 130X3.0P	165	32	156	132	153	17	6 - ø6.4	6 - ø8	3 - M10	35.0	
YSFT - M95X2.0P	130	32	10	4	120	98	117	-	3 - M10	35.0	YSFTA-M 140X3.0P	180	32	166	142	165	17	6 - ø6.4	6 - ø10	3 - M10	35.0	
YSFT - M100X2.0P	135	32	10	4	125	103	122	-	3 - M10	35.0	YSFTA-M 150X3.0P	190	32	180	152	175	17	6 - ø6.4	6 - ø10	3 - M10	35.0	
YSFT - M110X2.0P	145	32	10	4	134	112	132	-	3 - M10	35.0	YSFTA-M 160X3.0P	205	32	190	162	185	17	6 - ø8.4	6 - ø10	3 - M10	35.0	
YSFT - M120X2.0P	155	32	10	4	144	122	142	-	3 - M10	35.0	YSFTA-M 170X3.0P	215	32	205	172	195	17	6 - ø8.4	6 - ø10	3 - M10	35.0	
YSFT - M130X2.0P	165	32	12	5	154	132	152	-	3 - M10	35.0	YSFTA-M 180X3.0P	230	32	215	182	210	17	6 - ø8.4	6 - ø10	3 - M10	35.0	
YSFT - M140X2.0P	175	32	14	6	164	142	162	-	3 - M10	35.0	YSFTA-M 190X3.0P	240	32	225	192	224	17	6 - ø8.4	6 - ø10	3 - M10	35.0	
YSFT - M150X2.0P	185	32	14	6	174	152	172	-	3 - M10	35.0	YSFTA-M 200X3.0P	245	32	237	202	229	17	6 - ø8.4	6 - ø10	3 - M10	35.0	
YSFT - M160X3.0P	195	32	14	6	184	162	182	-	3 - M10	35.0												
YSFT - M170X3.0P	205	32	14	6	194	172	192	-	3 - M10	35.0												
YSFT - M180X3.0P	215	32	16	7	204	182	202	-	3 - M10	35.0												
YSFT - M190X3.0P	225	32	16	7	214	192	212	-	3 - M10	35.0												
YSFT - M200X3.0P	235	32	18	8	224	202	222	-	3 - M10	35.0												



GLO-YSANロックナットは、シンプルな構造になっており、めねじと当り面を同時加工することにより高い直角度を発揮します。

Simple structure GLO-YSAN locknut, simultaneously machined threading and end face, assuring minimum deviation error.

- 材質: S45C(S45E4)調質
- RoHS対応
- 硬度: HRC 26°~28°
- ねじ精度: ISO 4H
- ねじ加工方式: 切削加工
- 直角度: 0.005mm

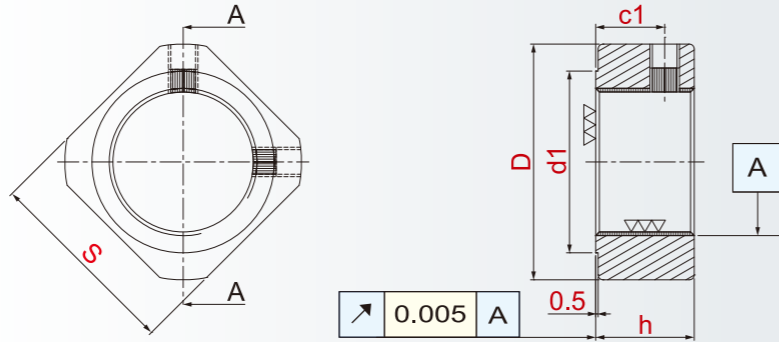
- Material Composition: S45C(C45E4)Thermal refining
- Hardness: HRC 26° ~ 28°
- Thread Precision: ISO 4H
- Processing method: machined
- Squareness: 0.005mm



GLO-YSAN

GLO-YSAN

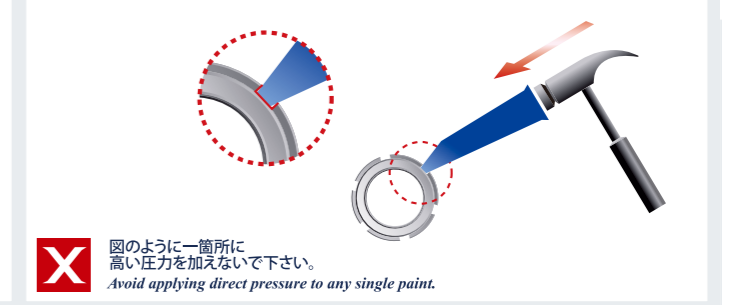
Thread	D	h	g	t	d	Thread	D	h	g	t	d
YSAN 0 - M10 x 0.75P	18	4	3	2	13.5	YSAN 19 - M95 x 2.0P	125	17	10	4	113
YSAN 1 - M12 x 1.0P	22	4	3	2	17	YSAN 20 - M100 x 2.0P	130	18	10	4	120
YSAN 2 - M15 x 1.0P	25	5	4	2	21	YSAN 21 - M105 x 2.0P	140	18	12	5	126
YSAN 3 - M17 x 1.0P	28	5	4	2	24	YSAN 22 - M110 x 2.0P	145	19	12	5	133
YSAN 4 - M20 x 1.0P	32	6	4	2	26	YSAN 23 - M115 x 2.0P	150	19	12	5	137
YSAN 5 - M25 x 1.5P	38	7	5	2	32	YSAN 24 - M120 x 2.0P	155	20	12	5	138
YSAN 6 - M30 x 1.5P	45	7	5	2	38	YSAN 25 - M125 x 2.0P	160	21	12	5	148
YSAN 7 - M35 x 1.5P	52	8	5	2	44	YSAN 26 - M130 x 2.0P	165	21	12	5	149
YSAN 8 - M40 x 1.5P	58	9	6	2.5	50	YSAN 27 - M135 x 2.0P	175	22	14	6	160
YSAN 9 - M45 x 1.5P	65	10	6	2.5	56	YSAN 28 - M140 x 2.0P	180	22	14	6	160
YSAN 10 - M50 x 1.5P	70	11	6	2.5	61	YSAN 29 - M145 x 2.0P	190	24	14	6	172
YSAN 11 - M55 x 2.0P	75	11	7	3	67	YSAN 30 - M150 x 2.0P	195	24	14	6	171
YSAN 12 - M60 x 2.0P	80	11	7	3	73	YSAN 31 - M155 x 2.0P	200	25	16	7	182
YSAN 13 - M65 x 2.0P	85	12	7	3	79	YSAN 32 - M160 x 3.0P	210	25	16	7	182
YSAN 14 - M70 x 2.0P	92	12	8	3.5	85	YSAN 33 - M165 x 3.0P	210	26	16	7	193
YSAN 15 - M75 x 2.0P	98	13	8	3.5	90	YSAN 34 - M170 x 3.0P	220	26	16	7	193
YSAN 16 - M80 x 2.0P	105	15	8	3.5	95	YSAN 36 - M180 x 3.0P	230	27	18	8	203
YSAN 17 - M85 x 2.0P	110	16	8	3.5	102	YSAN 38 - M190 x 3.0P	240	28	18	8	214
YSAN 18 - M90 x 2.0P	120	16	10	4	108	YSAN 40 - M200 x 3.0P	250	29	18	8	226



- 材質：S45C(C45E4)調質
- RoHS対応
- 硬度：HRC 26°~28°
- ねじ精度：ISO 4H
- ねじ加工方式：切削加工
- 直角度：0.005mm
- ・ Material Composition: S45C(C45E4)Thermal refining
- ・ Hardness: HRC 26° ~ 28°
- ・ Thread Precision: ISO 4H
- ・ Processing method: machined
- ・ Squareness: 0.005mm

GLO-YSRN

取り付け・取り外し事例 Specifics for Installation



Thread	D	h	d1	n - m	c1	S	MAX.Nm
YSRN - M5 x 0.5P	12.5	5	8	2 - M3	2.7	11	0.9
YSRN - M6 x 0.75P	13.5	5	9	2 - M3	2.7	12	0.9
YSRN - M8 x 1.0P	16	6.5	11	2 - M3	4	14	0.9
YSRN - M10 x 1.0P	19	8	13	2 - M3	5.5	16	0.9
YSRN - M12 x 1.0P	22	8	16	2 - M4	5.5	19	2.2
YSRN - M15 x 1.0P	25	8	19	2 - M4	4.75	22	2.2
YSRN - M17 x 1.0P	29	13	21	2 - M4	9	24	2.2
YSRN - M20 x 1.0P	35	11	27	2 - M4	7	30	2.2
YSRN - M25 x 1.5P	43	15	32	2 - M6	10	35	8.0
YSRN - M30 x 1.5P	48	20	37	2 - M6	14	40	8.0
YSRN - M35 x 1.5P	60	21	47	2 - M6	14	50	8.0
YSRN - M40 x 1.5P	62	25	47	2 - M6	18	50	8.0

精密ロックナット使用例

Application ▬ GLO-YS NUT

